



## 64509223325 Air Conditioning Discharge BMW Pipeline Fit For 1 3 serie E90 2.0L 2012

Our Product Introduction

for more products please visit us on [futureacparts.com](http://futureacparts.com)

### Basic Information

- Place of Origin: China
- Brand Name: Freedom Future
- Model Number: 888940
- Minimum Order Quantity: Negotiable
- Price: Negotiable
- Packaging Details: standard packing, as customer demands
- Delivery Time: 7 - 15 working Days
- Payment Terms: L/C,T/T,etc.



### Product Specification

- Pressure Rating: 300 Psi
- Color: Silver
- Temperature Range: -40°C To 140°C
- Weight: Lightweight
- Oem Part Number: 64509223325
- Flexibility: Flexible
- Material: Aluminum
- Resistance: Corrosion Resistant



## Product Description

### 64509223325 BMW Pipeline Fit For 1 3 serie E90 2.0L 2012

Our automotive air conditioning hoses feature an advanced multi-layer construction engineered for superior performance and durability in demanding applications.

#### Advanced Construction Features

**Inner & Middle Rubber Layers:** Chloroprene rubber (CR) provides excellent anti-permeation performance with low refrigerant permeability and resistance to compressor oils

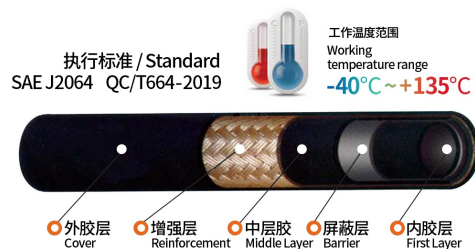
**Nylon Shielding Layer:** Nylon 6 material offers exceptional toughness, shock resistance and heat resistance while reducing refrigerant penetration

**Specification Diversity:** Automobile air conditioning pipes are available in various specifications, such as  $\Phi 8$ ,  $\Phi 10$ ,  $\Phi 13$ ,  $\Phi 16$ ,  $\Phi 19$ , etc., to meet the needs of different models and systems.

The production and design of automobile air conditioning pipes take into account the ease of assembly and disassembly, and the materials and specifications of the products correspond to the original car parts.

## C 型空调软管 Type C Air Conditioner Hose

适合制冷剂 / Applicable refrigerant  
R134a, HFO-1234yf



#### C 型空调软管尺寸及性能参数

Sizes and performance parameters of type C air conditioner hose

| 公称直径<br>Dimension | 英寸<br>Inch | 内径<br>I.D. | 外径<br>O.D. | 壁厚<br>Wall Thickness | 壁厚差<br>Wall Diff | 工作压力<br>Work Pressure | 爆破值<br>Burst Pressure | 弯曲半径<br>Bend Rad | 渗透量<br>Permeability |
|-------------------|------------|------------|------------|----------------------|------------------|-----------------------|-----------------------|------------------|---------------------|
| 8.2               | 5/16"      | 8.2+0.4    | 15.2±0.4   | 3.5                  | ≤0.4             | 3.5                   | ≥22                   | 75               | 1.6                 |
| 10.5              | 13/32"     | 10.5+0.4   | 17.4±0.4   | 3.5                  | ≤0.4             | 3.5                   | ≥23                   | 75               | 1.6                 |
| 11.2              | 7/16"      | 11.2+0.4   | 18.5±0.4   | 3.8                  | ≤0.4             | 3.5                   | ≥23                   | 75               | 1.6                 |
| 13.2              | 1/2"       | 13.2+0.4   | 20.8±0.4   | 3.8                  | ≤0.4             | 3.5                   | ≥22                   | 85               | 1.6                 |
| 15.2              | 5/8"       | 15.2+0.4   | 22.8±0.4   | 3.8                  | ≤0.4             | 3.5                   | ≥22                   | 85               | 1.6                 |
| 16.0              | 5/8"       | 16.0+0.4   | 23.1±0.5   | 4.8                  | ≤0.4             | 3.5                   | ≥22                   | 105              | 1.6                 |
| 19.0              | 3/4"       | 19.0+0.5   | 28.5±0.5   | 5.0                  | ≤0.4             | 3.5                   | ≥22                   | 110              | 1.6                 |
| 22.0              | 7/8"       | 22.0+0.5   | 31.5±0.5   | 4.8                  | ≤0.4             | 3.5                   | ≥22                   | 110              | 1.6                 |
| 25.0              | 1"         | 25+0.5     | 35.0±0.5   | 5.0                  | ≤0.4             | 3.5                   | ≥22                   | 110              | 1.6                 |

#### Technical Specifications

**Temperature Range:** -40°C to 140°C (-40°F to 284°F)

**Construction:** Corrosion-resistant aluminum

**Installation:** Easy installation process

**Pressure Rating:** High pressure (Up to 300 psi)



## Applications

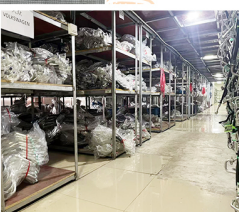
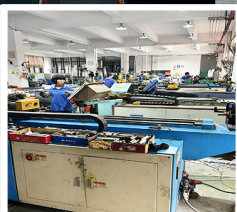
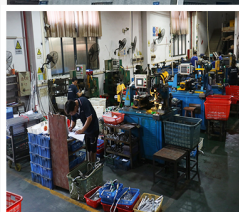
- Automotive air conditioning systems
- Refrigerant line replacement
- AC system repairs and maintenance



# COMPANY PROFILE

WE SPECIALISE IN THE A/C HOSES FOR 20 YEARS,

WE ARE GOOD AT MANUFACTURING VARIOUS A/C JOINTS AND A/C PIPES ACCORDING TO DRAWINGS AND PHYSICAL SAMPLES.



120+ WORKER 80+ MACHINE 7000M<sup>3</sup> FACTORY

## Support & Services

Our technical support team provides comprehensive assistance for all your AC system needs:

- Installation guidance and support
- Maintenance and repair services
- Product testing and analysis
- Customization options

Our company is committed to providing automotive air-conditioning solutions. Automotive cooling nets, automotive expansion valves, and automotive air-conditioning pipes are our company's core products. We believe that cooperating with us can provide you with professional solutions.

Contact our expert team for any questions regarding installation, maintenance, or troubleshooting of your AC hose system.



Ziyou Innovation Trading Co., Ltd.



freedomfuture38@gmail.com



futureacparts.com

